

THIRD QUARTER 2022

FLAG CITY TRUCK & EQUIPMENT

151 Stanford Parkway • Findlay, OH 45840

TRUCK PARTS WAREHOUSE

All specials good thru September 30th, 2022 or while supplies last!



5TH WHEEL ASSEMBLIES *Top Plate Assembly*



While Supplies Last

1770-JSK37USL
Sale **\$1,267.00**

#1770-JSK37FSL
Sale **\$1,121.00**

#1770-JSK37HSL
Sale **\$1,127.00**

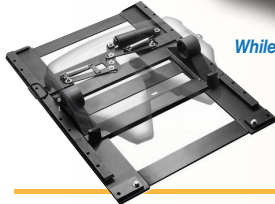


7000 Series Top Plate

While Supplies Last

#3065-SLTPL7000
Sale **\$1,321.00**

• 55,000 pounds vertical load
• 150,000 pounds drawbar pull
• Approximate Weight: 245 lbs.



Top Plate Assembly



While Supplies Last

#3889-XA351ALP
Sale **\$1,427.00**

• 55,000 pounds vertical load
• 150,000 pounds drawbar pull
• Approximate Weight: 226 lbs.

EMPLOYMENT OPPORTUNITIES

IMMEDIATE OPENINGS PASS-THE-WORD!

Diesel Mechanics

Diagnose, repair and maintain heavy-duty trucks.

Body Shop Technicians

Restore damaged equipment to the original integrity, function, and appearance.

Fab Shop Technicians

Diagnose, repair and maintain heavy-duty trucks with emphasis on air-brake plumbing and 12V electrical.

We offer competitive pay and benefits including medical, prescription drug, vision and dental plans, life insurance, 401(k), paid vacation and holidays.

For complete job requirements check our employment opportunities link at www.flagcitymack.com or contact: Andrea Sibila, HR Director 330.521.4484, or e-mail Andrea@BrechtbuhlerTrucks.com

FLAG CITY TRUCK PARTS WAREHOUSE

EXCELLENT VALUES. EXPERT TECHNICAL SUPPORT.

Check Out the Diamond Gard STARTERS

Page 4

OUR VOLUME BUYING HELPS US MAINTAIN THE LOWEST PRICES!

Prices good while current supplies last.

EZ ACCESS OFF I-75
Take exit #157 west 500 feet, turn right on Stanford Parkway. Our modern 6-acre facility is located at 151 Stanford Parkway.



DAILY DELIVERY ROUTES

NOTICE TO CUSTOMERS

Please know that we are doing everything that we can to continue to offer the best possible value to our customers. However, it is important to note that our prices are subject to change due to the unpredictable fluctuation in the pricing that we receive from our suppliers.



BATTERY SALE



Group 31
925 CCA
3/8" Stud Post
Part #3551-PX31925C702

WARRANTED 2 YEARS \$99.95 With Good Care

HERE WHEN YOU NEED US WITH EXTENDED HOURS

Parts and Accessories Warehouse
Monday - Friday 7:00 AM - 7:00 PM
Saturday - Closed
Sales:
Monday - Friday 8:00 AM - 5:00 PM
Saturday by appointment
Service:
Monday - Friday 7:00 AM - 7:00 PM



SALES • SERVICE PARTS • LEASING
www.flagcitymack.com

E-Z Order PARTS DIRECT
330-417-8953

We Welcome



Flag City Truck charge accounts are available with approved credit.

DRIVETRAIN COMPONENTS

SPICER



U-Joints & Strap Kits

2104-5103X	U-Joint Kit	\$19.95
2104-5280X	U-Joint Kit	\$42.95
2104-5281X	U-Joint Kit	\$84.95
2104-5675X	U-Joint Kit	\$48.95
2104-5676X	U-Joint Kit	\$85.95
2104-5677X	U-Joint Kit	\$64.95



AlexK@FlagCityMack.com
151 Stanford Parkway
Findlay, OH 45840
Call Parts Direct: 330-417-8953



E-Z Order Parts DIRECT LINE: 330-417-8953

Motor Wheel
Performance on the Move

THE INDUSTRY'S PREMIER LIGHTWEIGHT BRAKE DRUM

Help increase fuel efficiency and carrying capacity with the industry's premier lightweight brake drum: CentriFuse® Lite. Featuring the robust performance of original CentriFuse, CentriFuse Lite can reduce tractor/trailer total weight by up to 232 pounds without sacrificing durability or stopping power.

Lightweight

Just 83 pounds! Ideal for weight-sensitive applications.

Proven

Based on the original CentriFuse design, with over 80 years of history and performance.

Performance

Permanently bonded steel shell provides proven resistance to heat cracks.

Durable

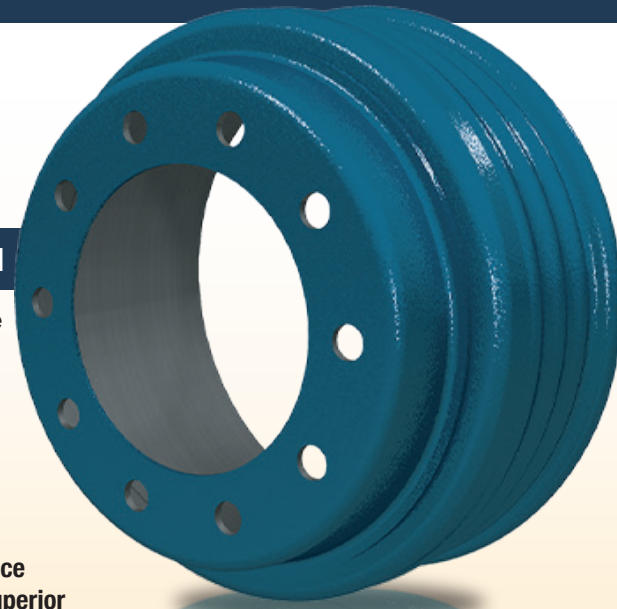
Proprietary alloy braking surface reduces fade and wear with superior heat absorption.

Precision Balanced

Mass centering process improves balance for a smoother ride.

Guaranteed

Backed with industry-leading, 10-year written limited warranty* for confidence and peace of mind.



Part # 5522-89996B

\$169.95

GET YOUR TRUCK READY FOR THE SUMMER HEAT WITH ROAD CHOICE HVAC



THE PARTS YOU NEED.

E-Z Order Parts DIRECT LINE: 330-417-8953

COMPLETE DAMAGE REPAIR & CUSTOMIZE YOUR PAINT

PREMIUM PAINT & BODY WORK.

Certified Technicians. Professional Results.

FREE On-Site Estimates



2018 International completed restoration with custom paint.



We are doing **BIG** things in our Body Shop. We offer complete Body Repair and restoration with certified techs.

We do it right ... stripped down, degreased and sandblasted to provide a long term return on your investment.

LIMITED TIME OFFER ...

Summer Paint Special!

UP TO **10%** OFF FULL BODY OR FRAME PACKAGES!

Let us show you what we can do!

Contact Body Shop Manager Mike Brown today for more information on all of our restoration services.

f LIKE US on facebook.com/flagcitytruckequipment



DIRECT LINE **330-495-4054**
BrownMike@FlagCityMack.com



Contact Us. Connect with the department you need directly for faster service.

To provide a better customer experience we have added **Call Direct** numbers. Now our customers can call these numbers direct to avoid being transferred. Our **800-472-9597** is still available for toll-free parts orders.

PARTS 330-417-8953

SERVICE 330-417-9138

BODY SHOP 330-495-4054

TRUCK SALES 330-495-6170



Contact Us. Connect with your representative directly for faster service.

PARTS DEPARTMENT

	DIRECT PHONE LINE
Alex Kujawski Manager	330-495-4780
Mark Helfrich	330-437-5453
Chris Herman	330-495-4014
Chris Strait	330-417-9551
Tim King	330-691-9852
Andy Reyna	330-437-5235

SERVICE DEPARTMENT

Jeremy Roszman Manager	330-417-9094
Jamie Schlacter Shop Foreman	330-691-9851

BODY SHOP

Mike Brown Manager	330-495-4054
---------------------------	---------------------

TRUCK SALES

Mike Brown Sales Representative	330-495-6170
--	---------------------

E-Z Order Parts DIRECT LINE: 330-417-8953

Popular Torque Rods now in stock call for pricing & availability!

Introducing **ATRO TORQUE RODS**



ATRO's torque rods are more robust than OEM rods, and are available for almost any suspension. The design makes **installation easy** as they automatically zero out to ride height and eliminate the clocking positions. ATRO's proprietary polyurethane bushings are **chemically resistant to contaminants, and require no maintenance or grease** providing torque rods and bushings that outperform and outlast OEM or other replacements.

Industry's only 3-year warranty.



PANA-PACIFIC



UNIDEN 40-CHANNEL CB RADIO WITH SWR METER

DESCRIPTION
 SWR Meter - Antenna Tuning
 Chrome Front Panel
 Public Address
 Automatic Noise Limiter
 RF Gain Control
 Mic Gain Control
 Extra-Long Mic Cord
 PA/CB Switch
 Analog S/RF Meter
 Instant Channel 9 Access
 DC Power Cable
 High-Cut Filter
 LED Channel Readout
 Front Panel Mic Connector

ITEM# PC78LTX **\$94.99**

EX-GUARD®
 WE'VE GOT YOU COVERED!™

XG-D125G2



Extreme-duty, mid-height protection for the bumper, fog lights, radiator, and CMS on set-back axle truck models. Generation 2 design, with sharper bends, curves back towards the truck for increased aerodynamics. *DEEP STYLE* Recommended for **Mack Anthem and Freightliner New Generation (P4) Cascadia** models only.

PRODUCT DETAILS
FINISH: Ex-Guard® Corrosion Resistant PVC coating
MATERIAL: 8 Gauge High-Tensile Steel
LATCH TYPE: Adjustable, Dual Action
GUARD CONSTRUCTION: 2 - Piece
INSTALL TIME: Less than one hour
WEIGHT: 155 LBS (Not Including Brackets)
DIMENSIONS: 94" x 31" (WxH)

WHAT IS THE DEEP STYLE?
 Deep style guards have 4" lower bottom bar to accommodate fog lights and CMS on low-clearance bumpers.

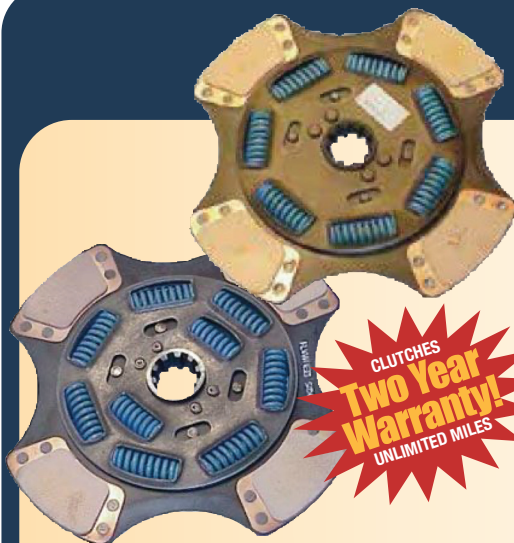
Order from stock now - supplier lead times are unpredictable. Other applications are available by special order.
 Mounting brackets sold separately.

ITEM# XG-D125G2 **\$1,362.50**

ROAD CHOICE TRUCK PARTS

Extreme Sale!

CLUTCHES & FLYWHEELS



1000-CLU20892582 \$549.95
 15.5" X 2" 7 SPR 1700 TRQ
1000-CLU20892582H \$599.95
 15.5" X 2" 7 SPR 2050 TRQ
1000-CLU20893551 \$599.95
 15.5" X 2" 9 SPR 1700 TRQ
1000-CLU20893551H \$649.95
 15.5" X 2" 9 SPR 2050 TRQ

CLUTCHES
 Two Year Warranty!
 UNLIMITED MILES

FLYWHEELS
 One Year Warranty!
 UNLIMITED MILES

1000-FLY530GB3170 \$299.95
 MACK E7 - OEM#20706350
1000-FLY530GB3145BM \$274.75
 MACK E7 E-TECH SERIES - OEM#20706375



ROAD CHOICE TRUCK PARTS

NOAT Extended Life 50/50 Prediluted Antifreeze & Coolant - 1 Gallon

- Eliminates the need for SCAs and chemically charged filters
- Improves heat transfer capability
- Offers outstanding protection against corrosion and cavitation

NOAT EXTENDED LIFE	MEETS OR EXCEEDS THE FOLLOWING SPECIFICATIONS:
ASTM D6210 ASTM D4340	ASTM D3306 TMC RP329 TMC RP351 (COLOR)
RECOMMENDED FOR USE IN HEAVY-DUTY VEHICLES AND STATIONARY EQUIPMENT, REGARDLESS OF FUEL TYPE, INCLUDING:	
Caterpillar EC-1 Cummins CES 14603 John Deere H24A1, H24C1	Komatsu International GM Waukesha Ford New Holland Freightliner

Conventional Green 50/50 Prediluted Antifreeze & Coolant - 1 Gallon

Supplemental Coolant Additives (SCA) used in HD diesel applications to protect against corrosion and cavitation.

- Max Freeze-up protection to -84°F boil-up protection to +276°F
- Compatible with all conventional antifreeze

CONVENTIONAL COOLANT	MEETS OR EXCEEDS THE FOLLOWING SPECIFICATIONS:
ASTM D-3306 ASTM D-4340 Chrysler MS 7170 Ford ESE-M97B-44-A GM 1825M John Deere H24C1 SAE J1034	ASTM D-4985 Caterpillar Cummins 90T8-4 GM 1899M John Deere H24B1 Mack Truck Navistar B1 SAE J1941 TMC RP 302B Volvo/GM Heavy Truck

SCA Precharged Formulated 50/50 Prediluted Antifreeze & Coolant - 1 Gallon

- Road Choice SCA Precharged Fully Formulated Antifreeze & Coolant works in HD diesel, gas and natural gas systems.
- Incorporates nitrite to provide wet sleeve liner protection against cavitation
- Provides corrosion protection of cooling system metals and components
- Eliminates SCA mixing errors at initial fill

SCA PRECHARGED FULLY FORMULATED	MEETS OR EXCEEDS THE FOLLOWING SPECIFICATIONS:
Caterpillar Cummins 90T8-4, CES 14603 Detroit Diesel 7SE298, 93K217 Ford ESE-M97B44-A (Sec. 3.1, & 3.1.2) John Deere H24A1, H24C1 Navistar B-1, Type II Freightliner 48-22880	Volvo/Mack MTU 5048 GM 1899M ASTM D4985 ASTM D5345 ASTM D6210 TMC RP329



#AFRNOA053
\$7.49



#AFRRA053
\$7.49



#AFRCA053
\$7.49

Heavy Duty Starters: Go Ahead and Start Something Big.



IF IT FAILS, WE'LL REPLACE IT. GUARANTEED!*

Product Features

Easy installation: Weighs only 29 pounds

Designed and engineered for Durability and Long Life: Built to handle high start-stop applications, rugged thermal extremes and extended crank times

Draws less current when cranking: Easier on the batteries for longer life

Faster cranking speeds and greater torque: Help older, hard-to-start engines turnover

Three times the corrosion resistance: Stands up to extreme climates

Smart Design: No rotatable nose housing to come apart

Exceed industry requirements: for corrosion resistance, heat tolerance, and vibration

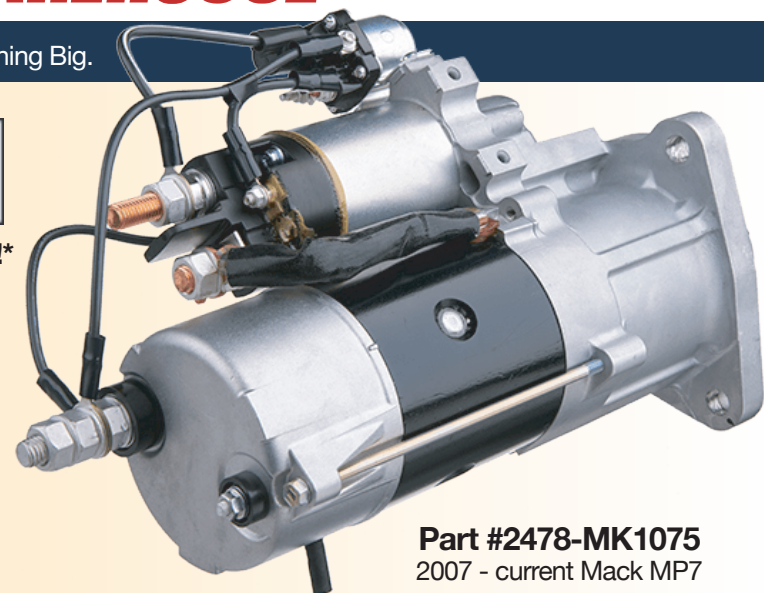
Warranty Features

Three year – Unlimited Mileage

No-Fault Warranty – All failures honored*

Warranty re-clocks – The new replacement unit carries a new 3-year unlimited miles warranty (not pro-rated)

* For more information visit: diamond-gard.com



Part #2478-MK1075
2007 - current Mack MP7

\$349.95

Part #2478-MK2078
2007 - current Mack MP8

\$349.95

NEW 39MT



HEAVY DUTY GEAR REDUCTION STARTER



ONLY
\$324.99

#8200308	New Starter 39MT R	\$324.99
#8200433	Motor 39MT 12V	\$324.99
#8200434	Motor 39MT 12V	\$324.99
#8200468	Starter 39MT 12V	\$324.99
#8201100	Starter New 39MT 1	\$324.99

Starters noted in red boxes are on sale!

Features & Benefits

New service models come standard with **Over Crank Protection (OCP)**. OCP monitors the internal temperature and prevents thermal damage to the starter by preventing overcranking.

These models feature an **Integral Magnetic Switch (IMS)**. IMS reduces voltage drop and ensures the solenoid receives the maximum available voltage in any starting condition.

Rotatable flange models were designed specifically to improve service flexibility and part number consolidation. They easily replace competitive units and provide full industry application coverage.

Warranty for all makes and models: 3 year/unlimited miles

OEM	ENGINE	OE	REMAN	ALL MAKES		PINION PITCH / TEETH	COMPETITIVE CROSS REFERENCES
				NEW SERVICE	ROT. FLANGE		
Freightliner Sterling Western Star	Cummins ISC, ISL	19011526, 8200081, 8200659, 8200688, 8200783	8300007	N/A	8200433	8/10 - 12 tooth	N/A
		19011517, 8200087, 8200625, 8200691	8300015				
	CAT C15, Cummins ISX, ISM, Detroit S60	19011521, 8200090, 8200091, 8200661, 8200686, 8200662	8300009	8200289	8200308	6/8 - 11 tooth	MIB970975, MIB970975FL, FL0975, MIB970777, MIB970777FL, FL0777, FL0579, D616005003, D616002004
		19011516, 19011518, 19011529, 19011530, 8200623, 8200627, 8200628, 8200692	8300019				
DD 13/15/16 2015 and older	8200329, 8200671, 8201022	8300084 ²	61002714	8200434	Mod 3 - 12 tooth	N/A	
Navistar	Cummins ISX, ISM, CAT C13, C15	8200050, 8200091, 8200604, 8200605	8300009	8200289	8200308	6/8 - 11 tooth	3815734C91, IN1478, D616005003, D616002004
		8200081, 8200659, 8200218, 8200635, 8200219, 8200664, 8200360, 8200672	8300007	8200817 ⁴	8200433	8/10 - 12 tooth	MITIN1378
	MaxxForce 11/13	8200857, 8200606	N/A			8/10 - 12 tooth	3667911C91, IN2178
Kenworth Peterbilt	Detroit Diesel Series 60 (S60), CAT C9, C10, C11, C12, C13, C15, Cummins ISX15, ISM	8200050, 8200090, 19011529, 8200104	8300009, 8300019	8200290	8200308	6/8 - 11 tooth	D61-6002-004, D61-6002-008, PC0979, PC1479, PC1879, M983579, D616005003, D616002004
		8200405 ³ , 8200741 ³ , 8200742 ³	N/A	8200742 ³	N/A		
	Cummins ISC, ISL	8200457, 8200808 ³ , 8200763 ³	N/A	N/A	8200433	8/10 - 12 tooth	D61-6002-003, PC1379
Mack	Mack E7	19011500, 19011505, 19011531, 8200037	8300020	8200288	8200308	6/8 - 11 tooth	MK0077, D616005003, D616002004
	Mack MP7	8200223, 8200612, 8201074, 61003774	8300059	8200468		8/10 - 11 tooth	21001797, MK1075
	Mack MP8 2012 and older Mack MP8 2013 and newer	8200214, 8200572, 8200611, 8200910, 8200417	61002699	8201100	N/A	8/10 - 12 tooth	21019460, MK2078, 21942885, MK2079
		8201076, 61003776	N/A			8/10 - 12 tooth	22398219
Volvo	Cummins ISX, ISM	19011516, 19011517, 19011530, 8200091, 8200662, 8200319, 8200820, 8201078, 8201079, 61003778, 61003779	8300009	8200289	8200308	6/8 - 11 tooth	20851006, VV0776, VV0977, D616005003, D616002004
		8200223, 8200612, 8201073, 61003773	8300059	8200468 ⁵		8/10 - 11 tooth	21001781, VV1076
		8200058, 8200186, 19011515	8300004	8200291	N/A	8/10 - 12 tooth	VV0279
	Volvo D11 Volvo D12 Volvo D13 2012 and older Volvo D13 2013 and newer	8200214, 8200572, 8200611, 8200909, 8200417	61002699	8201100		8/10 - 12 tooth	21019456, 21989095,
		8201075, 61003775				8/10 - 12 tooth	22398223
Autocar	Cummins ISX, ISM Cummins ISC, ISL, ISL-G	8200091, 19011530	8300009	8200289	8200308, 8200433	6/8 - 11 tooth	D616005003, D616002004
		8200218, 8200219	8300007	N/A		8/10 - 12 tooth	N/A



Legacy SILVER

Standard Features

- Air Lumbar
- Standard Parallelogram Suspension

HERITAGE SILVER

Standard Features

- Standard Parallelogram Suspension

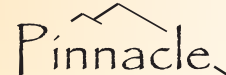
All Seats Incorporated seats meet or exceed FMVSS and SAE standards at date of manufacture.



All High Back Seats

#187300QW611	Pinnacle - Black Leather/Black Cloth	\$1099.95
#187300QW615	Pinnacle - Black Leather/Gray Cloth	\$1099.95
#188900KW21	Legacy Silver Black Cloth	\$624.95
#188900KW25	Legacy Silver Gray Cloth	\$624.95
#188900MW61	Legacy Silver Black Leather	\$749.95
#188900MW65	Legacy Silver Gray Leather	\$749.95
#189800KA21	Heritage Silver Black Cloth	\$479.95
#189800KA25	Heritage Silver Gray Cloth	\$479.95
#189800VA601	Heritage Silver Black Vinyl	\$479.95
#189800VA605	Heritage Silver Gray Vinyl	\$479.95

Ask about the NEW ...



The most comfortable decision you'll ever make.

"Your answer to driver retention sits here"

